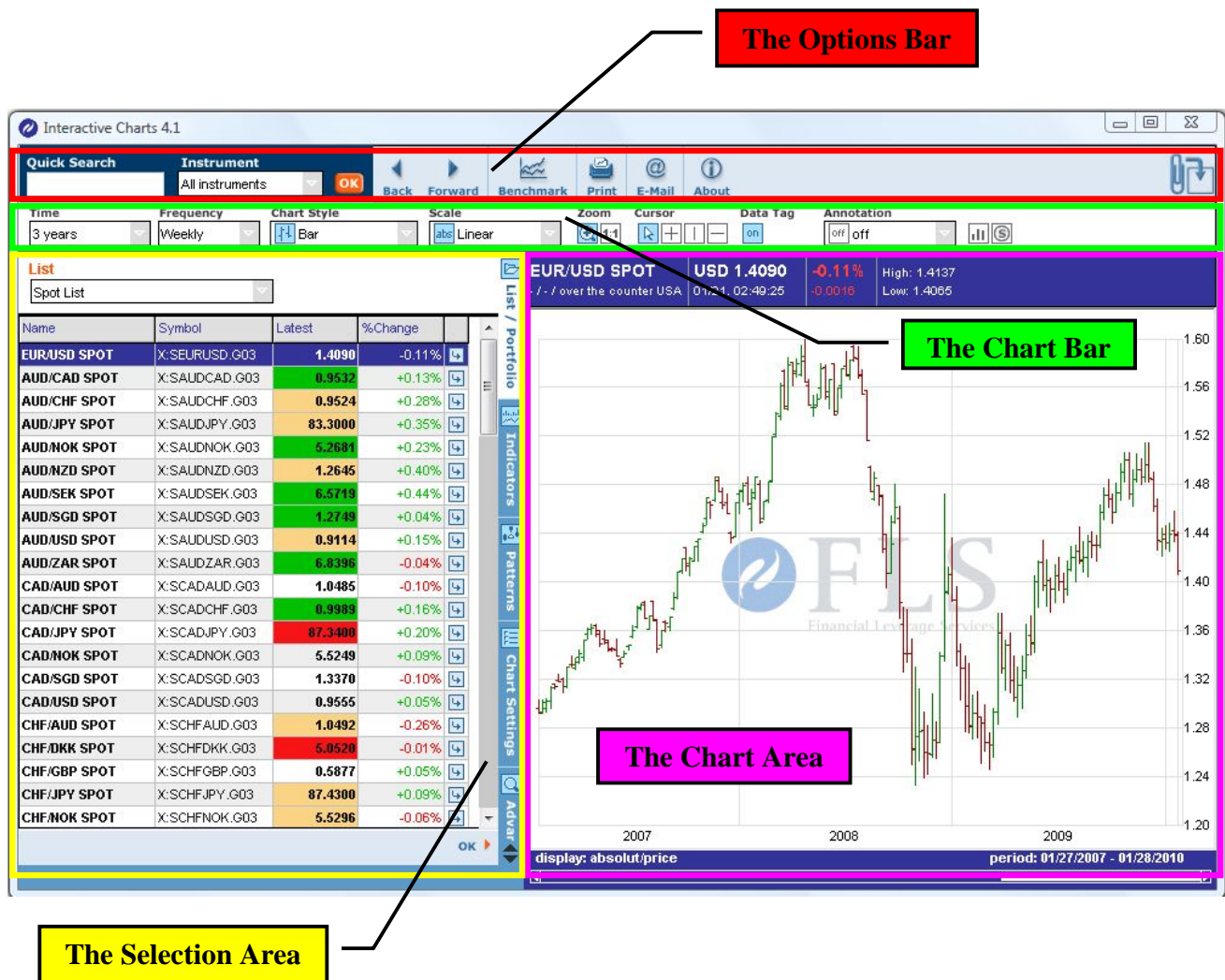


## FLS Chart – Quick User Guide

The user interface of FLS Chart consists of four areas with various functionalities:

1. The Options Bar
2. The Chart Bar
3. The Selection Area
4. The Chart Area



## 1 **The Options Bar:**

- **Quick Search:** to find instruments by symbol, name or ISIN
- **Back / Forward:** to easily browse through the displayed list
- **Benchmark:** to add up to four benchmarks to the chart
- **Print:** to print the current chart as you see it
- **E-Mail:** to send the current chart as a GIF attachment by mail
- **About:** to show copyright information of FLS Chart
- **Detach:** to pop-out the chart from the website

## 2 **The Chart Bar:** The Chart Bar provides various chart settings in pull-down menus and icons:

- **Time:** to set the charted time period
- **Frequency:** to set quote sampling rate
- **Chart Style:** to choose bar chart, candlestick, line chart, etc.
- **Scale:** to switch between linear and logarithmic scaling
- **Zoom:** to enable zooming into the chart
- **Cursor:** to use different cursor shapes
- **Data Tag:** to switch the tool tip with quote data in “on” and “off”
- **Annotation:** to switch annotations on/off within the chart for analysis, illustration, etc.
- **Volume:** to switch a volume chart “on” and “off”

## 3 **The Selection Area:** consists of tabs which allow one to select Instruments, Indicators & Technical Studies and settings. It determines what is displayed in the chart.

- **List / Portfolio:** offers instruments for selection
- **Indicators:** offer a range of indicators for Technical Analysis
- **Patterns:** provide automatic detection of candlestick patterns in charts
- **Chart Settings:** determine chart layout and appearance
- **Advanced Search:** enables a faster, more qualified search for instruments for cases when the quick search function yields too many results

## 4 **The Chart Area:** (right half of the window) presents the selected chart for editing and analyzing.